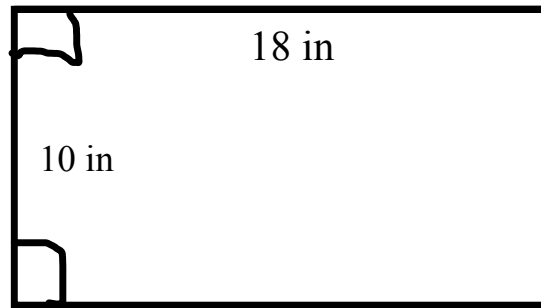
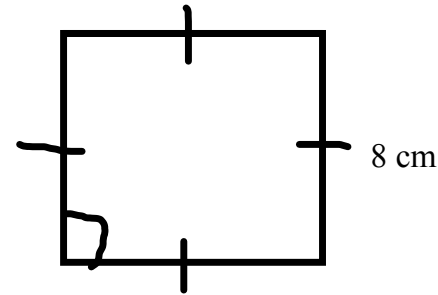


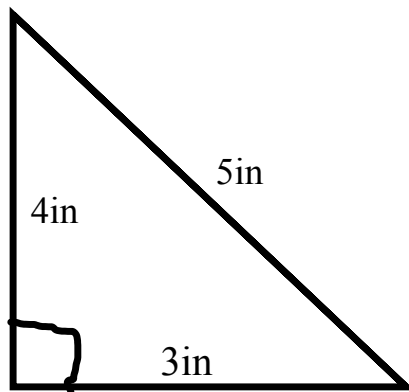
Find the perimeter and area for each figure:



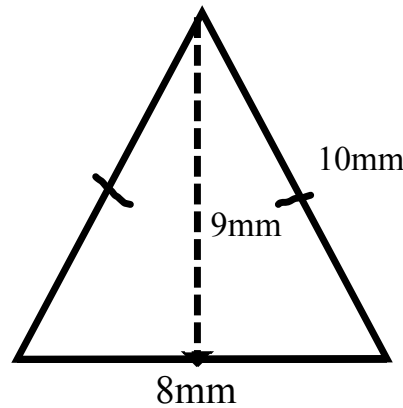
P = \_\_\_\_\_ A = \_\_\_\_\_



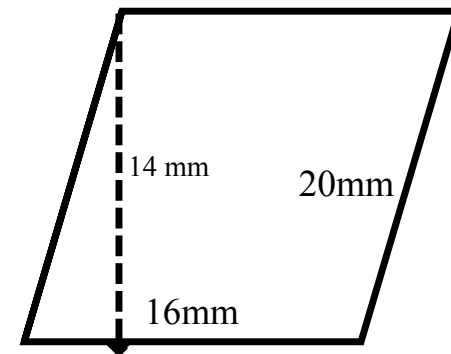
P = \_\_\_\_\_ A = \_\_\_\_\_



P = \_\_\_\_\_ A = \_\_\_\_\_



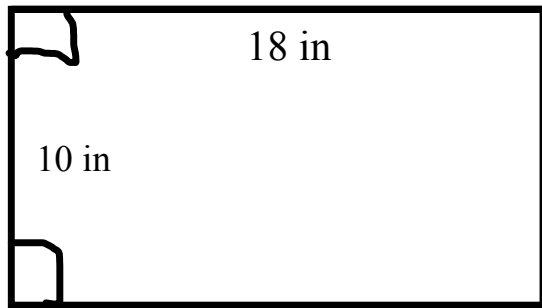
P = \_\_\_\_\_ A = \_\_\_\_\_



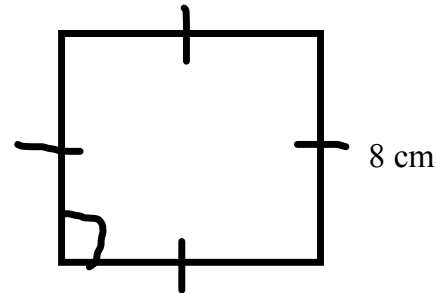
P = \_\_\_\_\_ A = \_\_\_\_\_

Answers on next slide.

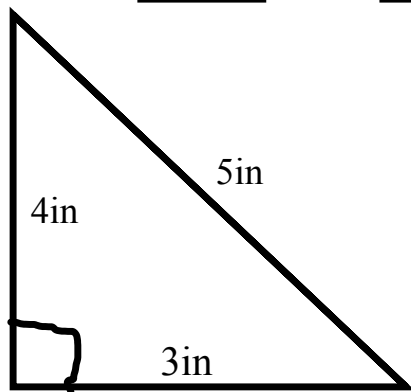
Find the perimeter and area for each figure:



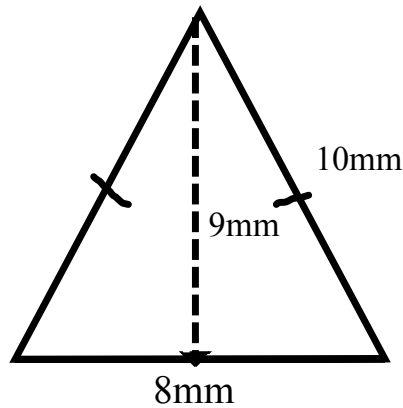
$$P = \underline{56 \text{ in}} \quad A = \underline{180 \text{ sq in}}$$



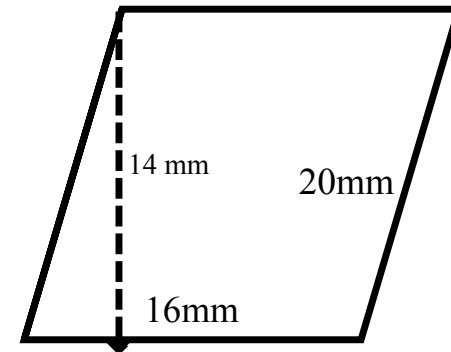
$$P = \underline{32 \text{ cm}} \quad A = \underline{64 \text{ sq cm}}$$



$$P = \underline{12 \text{ in}} \quad A = \underline{6 \text{ sq in}}$$



$$P = \underline{28 \text{ mm}} \quad A = \underline{36 \text{ mm}}$$



$$P = \underline{72 \text{ mm}} \quad A = \underline{224 \text{ sq mm}}$$

Find these using the circle below:

Name an arc \_\_\_\_\_

a radius \_\_\_\_\_

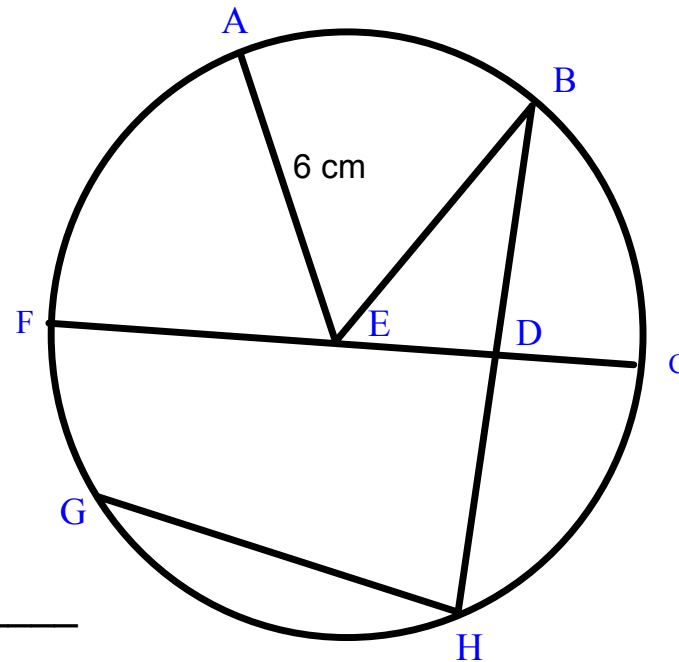
a diameter \_\_\_\_\_

a central angle \_\_\_\_\_

a chord \_\_\_\_\_

Find the circumference of this circle  
rounded to the nearest hundredth \_\_\_\_\_

Find the area of this circle to the nearest hundredth \_\_\_\_\_



\*\*\* Find C and A in terms of pi.

Answers on next slide.

Find these using the circle below:

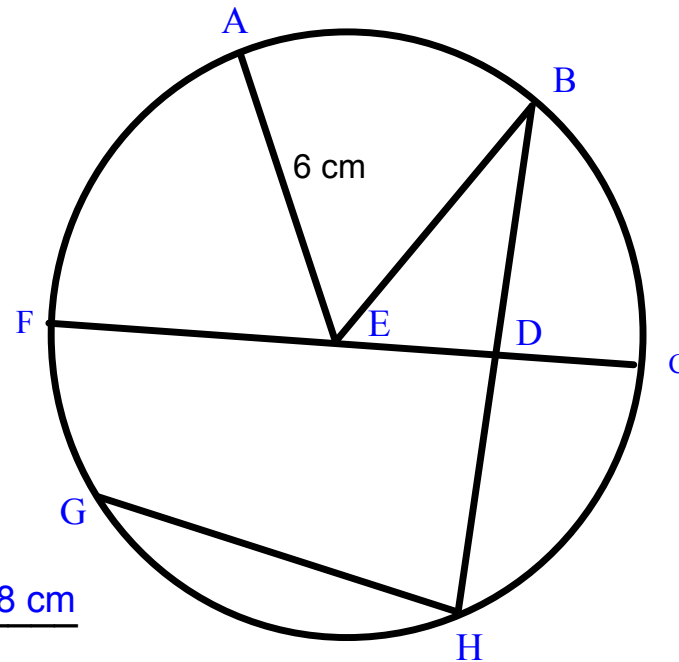
Name an arc BC

a radius AE, EB, FE, or EC

a diameter FC

a central angle  $\angle$  AEB

a chord GH, BH, or FC

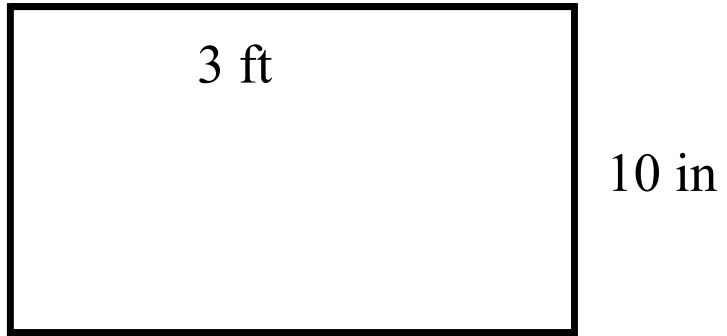


Find the circumference of this circle  
rounded to the nearest hundredth 37.68 cm

Find the area of this circle to the nearest hundredth 113.04 sq cm

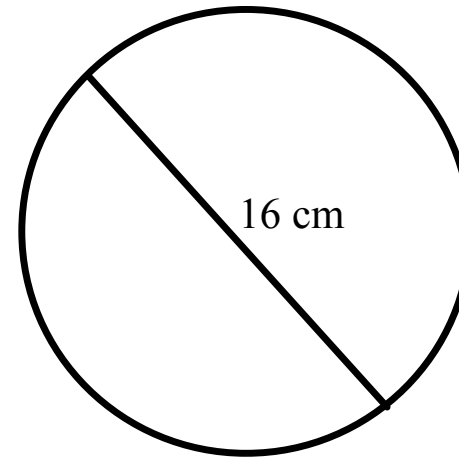
\*\*\* Find C and A in terms of pi.

$$C = 12\pi \text{ cm}, \quad A = 36\pi \text{ sq cm}$$



$$P = \underline{\hspace{2cm}}$$

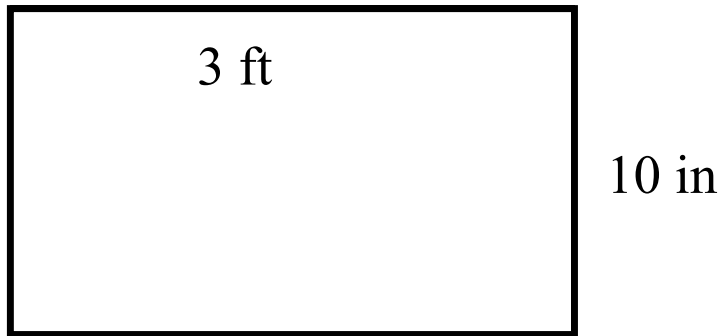
$$A = \underline{\hspace{2cm}}$$



$$C = \underline{\hspace{2cm}}$$

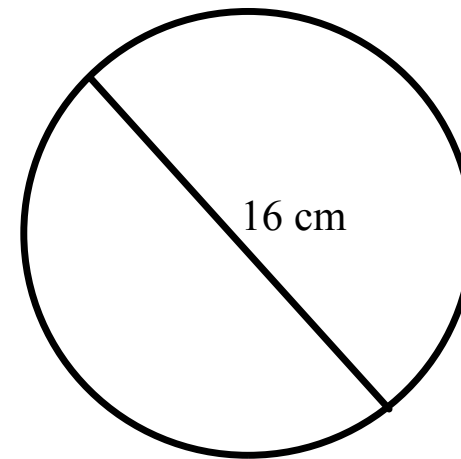
$$A = \underline{\hspace{2cm}}$$

Answers on next slide.



$$P = \underline{92 \text{ in}}$$

$$A = \underline{360 \text{ sq in}}$$



$$C = \underline{50.24 \text{ cm}}$$

$$A = \underline{200.96 \text{ sq cm}}$$